

# Springer

## Simmental

### SALE OF VALUE BASED GENETICS



*32 years of performance and carcass evaluation designed to improve your profit line. Unconditionally Guaranteed!*



LOT 5



LOT 8



LOT 11



LOT 7



LOT 6



LOT 10



LOT 9

SATURDAY 5:30 PM **FEBRUARY 25, 2012**

*Decorah Sale Barn* - DECORAH, IOWA

# Springer Simmental

SATURDAY FEBRUARY 25, 2012  
5:30 PM

Decorah Sale Barn - DECORAH, IOWA

**SELLING 60 HEAD**  
of powerful, voluminous and sound  
performance tested bulls.

**PLUS A FUTURE DONOR PROSPECT  
& Several Embryo Packages**

## SALE OF VALUE BASED GENETICS

**SALE DAY PHONES:**

**563-382-4203**

**JEFF SPRINGER (641) 330-6654**  
**CONOVER AUCTION SERVICE CELL PHONES:**  
**515-491-8078 • 515-491-1335**

### SALE DAY CONTACTS

**Mike Sorensen.....(641) 745-7949**  
**Tom Rooney.....(515) 491-6025**  
**Grant Conover.....(515) 419-1004**

### Special Simmental Representatives

**Jeff Thomas.....(406) 581-8859**  
*The Register Magazine*  
**Luke Keller.....(406) 599-2394**  
*North Central Field Rep for the American Simmental Association*  
**Seth Kaehler.....(507) 272-5403**  
*National Junior Trustee for the American Simmental Association*

*The following consultants will be evaluating the bulls prior to the sale, but will not be in attendance. You are welcome to see them through their eyes:*

**Doug Parke.....(859) 421-6100**  
**Lance Ellsworth.....(573) 819-3626**  
**Dalton Lundy.....(502) 727-6898**

**Auctioneer: Phil Schooley**  
**(641) 664-3450 - (641) 777-0478**

**CONSIGNORS: Graesser Brothers: Rod & Kevin Graesser, SD (605) 830-1574**  
**Steinbronn Farms, Inc: Kurt & Amy Steinbronn, IA; (319) 350-8195**  
**Old 6 Cattle Co, Randy Miller, IA; (319) 350-5960**  
**Kimball's Few Acres, Dan Kimball Family, WI; (920) 680-3445**  
**Gunn Simmentals, Michael Gunn, TX (713) 252-4367**  
**Little Sioux Cattle Co., Jon Weaver, IA (712) 223-2320**

### GENERAL INFORMATION

**SALE LOCATION:** Decorah Sale Barn. Decorah is located 50 miles south of Rochester, MN; 80 miles east of Mason City, IA and 80 miles northeast of Waterloo, IA. All of these cities have regional airports.  
**MOTEL ACCOMMODATIONS:** Super 8 Motel (Hwy 9 east). Phone: 563-382-8771. Heartland Inn (Hwy 9 East). Phone: 563-382-2269. Country Inn & Suites (Hwy 9 West). Phone: 563-382-9646.  
*For a great steak: Stone Hearth Inn, behind the Super 8, 811 Commerce Dr.*

**INSPECTION OF CATTLE:** Cattle will be available for inspection starting Friday, February 24th at the sale site. The cattle may be viewed at the farm anytime prior to the sale, call to make arrangements.  
**BULL DEVELOPMENT:** All bulls including the Denver bulls were fed 1.5% bwt grain and concentrate with free choice haylage until a maximum of 15 lbs., of grain mix was reached. Denver bulls were weighed prior to feed change for Denver for accurate gain comparisons. Once back in Cresco they went back to 15 lbs. grain mix and haylage. Yearling weights will be based off of ultrasound weights. At \$.11 to \$.12 per pound of corn we wanted to insure our genetics have the ability to convert forage efficiently and profitably guaranteeing greater profits for you.

**HEALTH:** Interstate health papers furnished on all cattle selling. Harmony vet clinic; Dr Lynn Aggen. All bulls and been vaccinated 3 times twice with Bovishield, Vision 7 with Lepto, Vibrio and poured in September, November and again in January. All animals selling will be PI/BVD tested negative.

**SPECIAL NOTES:** CUP data, scrotal measurements and homo black and homo polled data will be on our website. Please check for updates.

**SIGHT UNSEEN PURCHASE GUARANTEE:** We will guarantee satisfaction of sight unseen purchases providing you call prior to the sale so your needs are met completely.

**Payment:** CASH - Please settle for cattle promptly.

**TERMS & CONDITIONS:** All cattle sell according to the standard terms and conditions of the American Simmental Association.

**TRUCKING:** We will guarantee no more than \$200 delivery on purchases providing delivery accommodations are arranged by Springers Simmentals. Out of state buyers please contact me prior to the sale.

**INSURANCE:** Will be available sale day through Conover Auction Service, an American Livestock Agent.

**LIABILITY:** All persons attending this sale do so at their own risk, legal or otherwise for their safety or the behavior of the animals. The Owners, Auction Service and Sale Staff assume no liability for property loss or any accidents that may occur.

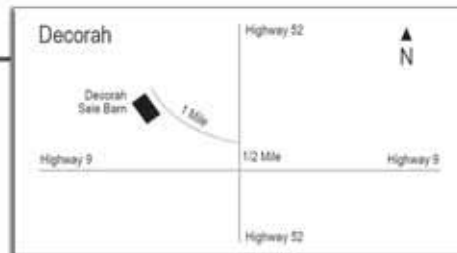
**ANNOUNCEMENTS:** From the block will take precedence over the catalog. Buyers unable to attend may send their bids to the Auction Service, Field Representatives or Auctioneer.

**LUNCH:** Complimentary lunch will be available sale day at 4:30 pm.

*Bulls will be semen checked and scotal measured prior to the sale with data on a supplemental sheet. We are retaining 50% semen interest in all bulls in the sale with the following exception. For an additional 1/3 payment of the purchase price of the bull, buyers will receive 100% semen interest on their purchase only. Commercial bull buyers would only be affected by this if their purchase would produce calves that would benefit the seedstock industry. Herd bull prospects have been Igenity tested with results listed in the catalog.*

*Bulls selling for more than \$2500 can be left until May 1 at no charge or receive a \$100 discount for sale day pickup and will be warranteed for the first year of service. Bulls selling for less than \$2500 will still be unconditionally guaranteed for the first year of service and can receive a \$50 discount for sale day pickup. They will be charged \$1.50 per day until pickup and I will not guarantee the use of a back up bull in case of injury.*

VIEW CATALOG ONLINE AT [WWW.SPRINGERSIMMENTAL.COM](http://WWW.SPRINGERSIMMENTAL.COM)



## SPRINGER SIMMENTAL

**Jeff & Lynda Springer**

3119 310th St Cresco, IA 52136

563-547-3831 - 641-330-6654 (cell)

[sprinsim@iowatelecom.net](mailto:sprinsim@iowatelecom.net)

Find Updated Pictures & Data at [www.springersimmental.com](http://www.springersimmental.com)

**SALE MANAGED BY:**

**CONOVER  
AUCTION  
SERVICE  
Inc.**



**AL & JEANNE CONOVER**  
641-227-3537 • Fax: 641-227-3792  
Email: [conover@conoverauction.com](mailto:conover@conoverauction.com)  
[www.conoverauction.com](http://www.conoverauction.com)

Dear Friends,

Welcome to our 12th annual sale of Value Based Genetics!!! Selection for superior seedstock that produce beef economically and efficiently has never been more important with the current profit potential. With 800 lb feeders bringing nearly the same price per pound as 500 lb feeders its obvious that 6-6.5 frame cattle that finish at 1350 to 1450 lbs are necessary to maximize profits.

We have spent 32 years committed to producing seedstock that will improve your bottom line efficiently. Reports of the All Star, Sweet Meat, Dirty Dog and Rio Bravo sons are that they calve easily, with a large enough calf to make a profit, gain or maintain their weight throughout the breeding season, and produce females that are more productive and profitable than anything they are compared to.

R Plus King of the Yukon is proving to be an exceptional sire. With the exception of one bull calf hurting his hip all the rest are in the bull pen and you will be impressed. His calves have exceptional volume with excellent spring of rib, great bone, large hooves, big butts, nuts and great structure. His daughters look to be phenomenal females with all of the above.

Remember our sight unseen buyer guarantee, just please call ahead so we can fulfill your needs with the right individuals. Our goal is and has always been unmatched customer service, buy with confidence that these bulls with improve your bottom line!!!!

Our family has had a great year. Michelle is in her second year of Vet school at ISU and it is obviously her passion. Todd continues working with Silgen as head of Safety. Todd also works on updating our website, videos and facebook. He does an awesome job and we appreciate his help and great ideas. Together they enjoy walks with their dog Tango and fixing up their house in Boone, IA.

Steve and Bri announced their engagement for marriage in June of 2012 and I couldn't be happier. Bri is awesome and we all love her a lot. Bri received a terrific promotion this summer and we are really proud of her. She works for a company that matches bone marrow transplants and really loves helping others. Steve is looking at another promotion within Target headquarters and continues to love playing basketball and now snowboarding.

Lynda is employed as district supervisor for the State of Iowa. She enjoys her job but really loves her garden, herb garden and making her fantastic jams and jellies. Of course I love her jams and jellies as well, the eating not the picking. The embryo business continues to grow and we are extremely fortunate to have partners and consigners with common goals and integrity.

I could not do all of this without the help, support and love of my family. I really appreciate Lynda pitching in with her meals, help and support, ALL of my kids taking time to help in Denver, their help when home and their marketing advice. Special thanks to Mike Wilson for his 15+ years of long hours and treating all of the cattle like his own, and to Dan Kimball for his friendship and fantastic fitting skills.

As always all of the cattle selling are guaranteed to perform as expected or we'll fix it to your satisfaction. We would encourage everyone to take advantage of our hospitality and join us Friday or Saturday for a showing of the bulls or tour of the cowherd.

Please remember our servicemen in your thoughts and prayers as they continue to protect our rights and liberties!

We look forward to seeing you Feb 25th!!!

Sincerely,

Jeff Springer



Jeff & Lynda Springer

Steve & Bri

Michelle & Todd

The sale will be broadcast on  
[www.conoveronlinesales.com](http://www.conoveronlinesales.com)  
and [www.cattleusa.com](http://www.cattleusa.com)  
See page 24 for more information

### Sale Managed By:

**CONOVER  
AUCTION  
SERVICE  
Inc.**



**AL & JEANNE CONOVER**  
641-227-3537 • Fax: 641-227-3792  
Email: [conover@conoverauction.com](mailto:conover@conoverauction.com)  
[www.conoverauction.com](http://www.conoverauction.com)

Dear Fellow Cattlemen,

It is with great pleasure we present you the 12th Annual Springer Simmental "Sale of Value Based Genetics." We look forward to your attendance at the Decorah Sale Barn where you can look over this outstanding set of functional Simmental bulls from the Springer family and their guest consignors. There is something for everyone in this offering from sons of "Sweet Meat" and "Yukon," to top pedigreed embryo packages and even a few choice purebred Angus.

For over thirty years the Springer family has strived toward one goal, creating functional, productive, "no holes" cattle that offer first rate phenotypes and individual performance. Through the accomplishment of this goal, they produce a top notch herd bull prospect that can help their customer excel in the feedlot, show ring and most importantly in their cow herd.

Many of these bulls in the sale offering are out of the famous sires "Sweet Meat" and "All Star," or are by daughters of these breed influencers. Simmental breeders throughout the country have come to appreciate these two for their maternal and carcass traits. Both will factor profitably into pedigrees in your herd to benefit your bottom line.

As always, please raise any questions or concerns that you may have with someone at the CAS office or the Springer family. We hope to see you all on the 25th in Decorah.

Sincerely,



Al Conover



Bart Weldon



Dave Sweeney



Jim Shirley

# SPRINGER SIMMENTAL EMBRYO OFFERING



**GB/SAS TOP BLACK S115**  
Donor dam of Lots 1A-D



**OLD/SAS WOMACK W442**  
Full sib to Lot 2

Lot **1A** **4 FROZEN EMBRYOS (GRADE 1)**  
Stored at Premier Embryo Services, Cresco, IA

Lot **2A** **4 FROZEN EMBRYOS (GRADE 1)**  
Stored at Premier Embryo Services, Cresco, IA

Lot **1B** **4 FROZEN EMBRYOS (GRADE 1)**  
Stored at Premier Embryo Services, Cresco, IA

Lot **2B** **4 FROZEN EMBRYOS (GRADE 1)**  
Stored at Premier Embryo Services, Cresco, IA

Lot **1C** **4 FROZEN EMBRYOS (GRADE 1)**  
Stored at Premier Embryo Services, Cresco, IA

Lot **2C** **4 FROZEN EMBRYOS (GRADE 1)**  
Stored at Premier Embryo Services, Cresco, IA

Lot **1D** **4 FROZEN EMBRYOS (GRADE 1)**  
Stored at Premier Embryo Services, Cresco, IA

**NICHOLS MANIFEST T79**  
2116547  
NICHOLS LEGACY M72  
NICHOLS MCM N13

**GB/SAS TOP BLACK S115**  
2433947  
SAS TOP DAWG K220  
RAINS BLACK 417G

Pedigree Estimate Production EPDs										Projected Carcass					
CE	BW	WW	YW	MCE	MM	MWW	Stay	CW	YG	Marb	BF	REA	API	TI	
6.9	0.6	37.7	69.4	9.1	6.4	25.2	21.7	4.7	-0.04	0.32	0.03	0.40	124.4	70.2	

- Seller guarantees two pregnancies per lot.
- Dam's Production: 2 BWR 94, 2 NR 118.
- Grandam's Production: 5 BWR 100, 5 NR 103, 2 YR 100.
- "Top Black" is one of the most powerful, moderate framed females in the breed today. Her daughters are all top producers at Graesser Brothers. The "Top Dawg" cows carry additional muscle and power yet the calves come light at birth and are sound and functional.
- "A Cut Above," maternal brother to the lots was the largest REA scanning bull at Denver this year with a 17.83 REA. He will be one of the most powerful bulls to sell this year.
- Sire is the Accelerated Genetics featured sire who has fantastic phenotype and EPD's



**NICHOLS MANIFEST T79**  
Sire of Lots 1A-D



**SAS T101 SWEET MEAT**  
Sire of Lots 2A-C

2



**SAS LICORICE S532**  
Lot 3 donor dam

Lot **3A** **4 FROZEN EMBRYOS (GRADE 1)**  
Stored at Premier Embryo Services, Cresco, IA

Lot **3B** **4 FROZEN EMBRYOS (GRADE 1)**  
Stored at Premier Embryo Services, Cresco, IA

Lot **3C** **4 FROZEN EMBRYOS (GRADE 1)**  
Stored at Premier Embryo Services, Cresco, IA

**R PLUS KING OF THE YUKON**  
2538002  
R PLUS BLACKOUT  
MISS R PLUS 7026T  
SAS LICORICE S532  
2349365

Pedigree Estimate Production EPDs										Projected Carcass					
CE	BW	WW	YW	MCE	MM	MWW	Stay	CW	YG	Marb	BF	REA	API	TI	
7.5	0.9	34.9	59.0	11.6	6.6	24.1	19.5	-1.4	0.06	0.21	0.02	-0.04	111.2	64.7	

- Seller guarantees two pregnancies per lot.
- Dam's Production: 2 NR 102.
- Grandam's Production: 3 NR 108.
- Maternal sister sold to Steinbrom Farms of IA for \$15,000 1/2 interest. Two other maternal sisters were each \$4,000 1/2 interest selections of Little Sioux Cattle Co. of IA.
- Dam has exceptional spring of rib and the most voluminous female at Springer Simmentals; she will not fit in a chute of any kind! Yet she is a 5 1/2 to 6 frame cow. This is a very predictable, profitable and trouble free cow family. She is also the dam of "Black Licorice" the Kaisand Cattle Co. sire leased to ORigen.
- Sire is homozygous black and polled bull that consistently transmits exceptional depth of body, incredible eye appeal and substantial foot and bone.



**SAS BLACK CHARGER X532**  
\$10,000 full brother to Lots 3D-F

Lot **3D** **4 FROZEN EMBRYOS (GRADE 1)**  
Stored at Premier Embryo Services, Cresco, IA

Lot **3E** **4 FROZEN EMBRYOS (GRADE 1)**  
Stored at Premier Embryo Services, Cresco, IA

Lot **3F** **4 FROZEN EMBRYOS (GRADE 1)**  
Stored at Premier Embryo Services, Cresco, IA

**SAS T101 SWEET MEAT**  
2391423  
HTP SVF IN DEW TIME  
SAS SWEETS STAR R101

DONOR DAM: SAS LICORICE S532

Pedigree Estimate Production EPDs										Projected Carcass					
CE	BW	WW	YW	MCE	MM	MWW	Stay	CW	YG	Marb	BF	REA	API	TI	
5.3	2.3	36.5	59.9	12.9	2.6	20.9	23.4	1.1	0.12	0.33	0.05	-0.02	120.4	65.8	

- Seller guarantees two pregnancies per lot.
- Dam's Production: 2 NR 102.
- Grandam's Production: 3 NR 108.
- Full brother to these lots, "Black Charger," was a \$10,000 selection of Kevin Healy of SD in last year's sale.
- Sire is one of those cattle that does so many things right. Calving ease, performance, eye appeal, and hair. His progeny are probably the soundest and deepest bodied in the industry. His daughters are becoming maternal cornerstones and his bulls are making their way to the picture pen.

# FUTURE ANGUS FOUNDATION FEMALE

Lot **4** **T F 1003 F R**  
Born: 03/20/2010 +16771563 Tattoo: 1003 Cow

Exar Luton 1831 [AMF-CAF-XF]  
Northern Improvement 4480 GF # [AMF-CAF-XF]  
Exar Saras Dream 9809  
Exar Expand 1241 [AMF-CAF-XF]  
1548545 Rafter S Blackcap P909  
JMS Blackcap JM86 +  
Connealy Frontline # [AMF-CAF-XF]  
Pleasant Hill of Conanga # [CAF]  
S A F Focus of E R # [AMF-CAF-XF]  
15493676 Black Bun of Conanga 285  
Black Brae of Conanga 5288 #

PRODUCTION EPDs			MATERNAL EPDs			\$ VALUES						
CED	BW	WW	YW	CEM	Milk	SEN	\$W	\$F	\$G	\$B		
1.7	1.2	1.67	1.101	1.12	1.25	-11.62	+28.01	+39.52	+25.38	+66.34		
CARCASS	CW	1.34	.05	MARB	1.38	.05	REA	1.33	.05	FAT	1.003	.05

- A.I. bred on 6-22-11 to Connealy Final Product. Vet examined safe and estimated due 3-25-12.
- Dam's Production: She posts 1 @ REA 105, Rib Fat 100, Rump Fat 83.
- Ranks in the top 3% for CEM and in the top 10% for WW, YW, CW, SF and SB among non parent cows in the breed.
- The dam was a \$4000 selection in the 2008 National Western Foundation Female Sale selected from Gaffney Family Cattle, Barneveld, WI. She stacks two of the Angus breed's most proven muscle bulls with B/R New Dimension 7127 and SVF Bandolier.
- The great-grand was a \$145,000 donor in the Sunny Valley & Sweetwater joint embryo program and is sired by Leachman Right Time.
- Her sire, First Rate, was a member of the 2007 Denver Grand Champion Pen of Three Bulls for Express Ranches. He sired the popular Triple Crown Winner Dameron First Class.



**CONNELY FINAL PRODUCT**  
Service sire to Lot 4

3

# DENVER PEN OF THREE PUREBRED BULLS



**GB/SAS A CUT ABOVE Y115**

Lot 5

Lot 5

**GB/SAS A CUT ABOVE Y115**

Reg # 2596929 Tattoo: Y115 BD: 01/03/11  
BW 91 lbs BWR 97 Adj. WW: 884 lbs WWR: 124

SAS T101 SWEET MEAT  
2391423  
HTP SVF IN DEW TIME  
SAS SWEETS STAR R101

GB/SAS TOP BLACK S115  
2433947  
SAS TOP DAWG K220  
RAINS BLACK 417G

EPDs														
CE	BW	WW	YW	MCE	MM	MWW	Stay	CW	YG	Marb	BF	REA	API	TI
5.4	1.9	42.0	64.1	13.4	2.9	23.9	23.5	2.8	0.01	0.25	0.03	0.24	119.3	68.0

- Dam's Production: 2 BWR 94, 2 NR 118.
- Homozygous Black and Homozygous Polled.
- This is one incredible bull and probably the best "Sweet Meat" son to date.
- Offers extreme muscle, yet is very correct in his movement and extremely wide based. Springers feel that with the way he is structured through his front shoulder he should offer calving similar or better than his sire with additional power.
- "Top Dawg" cows have all produced small birth weight calves with extra growth.
- "Y115" weighed 1,330 lbs. on 11/24 without creep before Jeff changed feed and broke him to lead. Incredible growth on a 6 frame animal!

igenity DNA Profile Scores										
ADG	Tenderness	Marb	% Choice	YG	Fat	REA	Hfr Preg Rate	Stayability	Calving Ease	Docility
4	4	6	6	6	6	6	7	8	4	7



**GB/SAS A CUT ABOVE Y115 • LOT 5**



**GB/SAS TOP BLACK S115**  
Dam of Lot 5



**SAS HEAVY DUTY**

Lot 6

Lot 6

**SAS HEAVY DUTY**

Reg # 2596947 Tattoo: Y224 BD: 02/04/11  
BW 90 lbs BWR 98 Adj. WW: 793 lbs WWR: 112

SAS T101 SWEET MEAT  
2391423

HTP SVF IN DEW TIME  
SAS SWEETS STAR R101

SAS QUEENIE  
2269573

CHCF BLACK RANGER 201B  
SAS SWEETS QUEEN K101

EPDs														Carcass															
CE	BW	WW	YW	MCE	MM	MWW	Stay	CW	YG	Marb	BF	REA	API	TI	CE	BW	WW	YW	MCE	MM	MWW	Stay	CW	YG	Marb	BF	REA	API	TI
6.8	1.1	43.5	66.2	12.7	-1.1	20.6	21.4	2.8	0.11	0.31	0.05	0.09	121.6	70.7	7.5	1.5	45.1	72.8	14.4	1.4	24.0	21.4	7.5	0.06	0.32	0.03	0.15	124.2	72.4

- Dam's Production: 6 NR 98. Calving Interval 6 @ 367 days.
- Heavy Duty is heterozygous black and homozygous polled. Offers extreme depth of flank, soundness and base width.
- Dam is built just like and has a near perfect udder. She is grandam to Lot 28, one of the top "Yukon" prospects in this year's lineup.
- This cow family consistently brings in highly marketable offspring that post at the top of the chart.
- Sire is a member of Cattle Vision's A.I. sire roster and Heavy Duty is a definite herd bull prospect.

igenity DNA Profile Scores										
ADG	Tenderness	Marb	% Choice	YG	Fat	REA	Hfr Preg Rate	Stayability	Calving Ease	Docility
3	3	7	7	6	5	6	8	6	5	6

Lot 7

**SAS MEAT WAGON**

Reg # 2596923 Tattoo: Y836 BD: 01/01/11  
BW 88 lbs BWR 100 Adj. WW: 789 lbs WWR: 111

SAS T101 SWEET MEAT  
2391423

HTP SVF IN DEW TIME  
SAS SWEETS STAR R101

ASR LITTLE RAIN U836  
2445144

HC HUMMER 12M  
ASR MS LITTLE RAIN S6150

EPDs														Carcass															
CE	BW	WW	YW	MCE	MM	MWW	Stay	CW	YG	Marb	BF	REA	API	TI	CE	BW	WW	YW	MCE	MM	MWW	Stay	CW	YG	Marb	BF	REA	API	TI
7.5	1.5	45.1	72.8	14.4	1.4	24.0	21.4	7.5	0.06	0.32	0.03	0.15	124.2	72.4	7.5	1.5	45.1	72.8	14.4	1.4	24.0	21.4	7.5	0.06	0.32	0.03	0.15	124.2	72.4

- Dam's Production: 1 BWR 100, 1 NR 111.
- Homozygous Black and Homozygous Polled.
- Another "Sweet Meat" son that carries the great carcass numbers of the "Hummer" cattle.
- Willie Altenburg claims this is his best cow family and Springers have seen nothing to challenge that statement.
- Dam is sired by "Hummer 12M" and has added capacity, wonderful disposition, a beautiful udder and fleshes very easily.

igenity DNA Profile Scores										
ADG	Tenderness	Marb	% Choice	YG	Fat	REA	Hfr Preg Rate	Stayability	Calving Ease	Docility
2	3	5	5	7	6	6	6	7	4	5



**SAS MEAT WAGON**

Lot 7

**100% heterosis is obtained with an F1 cross (Angus or Simmental). 67% is obtained with a composite bull on composite cows. Which will make you more profit???**





SAS T101 SWEET MEAT

Ref Sire **SAS T101 SWEET MEAT**  
 A Reg # 2391423 Tattoo: T101 BD: 02/16/07

HTP SVF IN DEW TIME  
 2285555  
 SAS SWEETS STAR R101  
 2293572

CNS DREAM ON L186  
 HTP SVF HONEYDEW  
 SAS/ASF ALL STAR  
 SAS SWEETS

EPDs							Carcass							
CE	BW	WW	YW	MCE	MM	MWW	Stay	CW	YG	Marb	BF	REA	API	TI
5.8	2.0	43.4	63.4	14.9	-4.4	17.3	23.1	2.3	0.15	0.36	0.06	0.03	124.1	69.9

- This bull just does everything right from calving ease and performance to eye appeal. He even has hair for the show ring. His calves are probably the soundest and deepest bodied in the industry.
- His daughters are nothing short of phenomenal brood cow prospects. They are consistently finding their way into the replacement pens. Something that will be a huge benefit to purchasing one of his sons. They are calving unassisted, have beautiful udders, wonderful dispositions and the chest capacity, power and volume to raise herd bulls of their own.
- "Sweet Meat" continues the legacy put forth by SAS/ASF All Star by producing bulls and heifers that do everything necessary for maximum profit.
- Sons have gained and performed well, maintain their weight well while breeding, offer excellent dispositions, offer carcass advantages and have stayed sound. They all make the bull sales and are value added.

**Our females breed back within 40 days of their original calving date, on grass. This includes 2's and 3's or they are sold!**



**RESERVE GRAND CHAMPION PEN OF 5 PUREBRED SIMMENTAL BULLS 2011 NATIONAL WESTERN STOCK SHOW**  
 (Featured 4 bulls sired by "Sweet Meat")



**GRAND CHAMPION PEN OF 3 PUREBRED SIMMENTAL FEMALES 2011 NATIONAL WESTERN STOCK SHOW**  
 (Featured 2 heifers sired by "Sweet Meat")

**"SWEET MEAT" SONS**



SAS SWEET BALDY • LOT 13

Lot **13** Reg # 2596938 Tattoo: Y208 BD: 02/13/11  
 BW 98 lbs BWR 89 Adj. WW: 715 lbs WWR: 101

SAS T101 SWEET MEAT HTP SVF IN DEW TIME  
 2391423 SAS SWEETS STAR R101  
 SAS CARIBOU BARBIE BLACK MAX  
 2464946 SAS SAMMY

EPDs							Carcass							
CE	BW	WW	YW	MCE	MM	MWW	Stay	CW	YG	Marb	BF	REA	API	TI
3.4	3.2	40.0	62.0	12.2	-0.5	19.5	23.5	3.6	0.12	0.24	0.03	-0.09	112.5	63.7

- Dam's Production: 2 BWR 95, 2 NR 103. Calving Interval 2 @ 369 days.
- Homozoyous Black and Homozoyous Polled.
- This baldy has style to burn, just like his sire.
- His dam is from the "Sammy" cow family that is predictable as the sun rising. The calves produced from this family are always value added cattle.
- "Sweet Baldy" is a great candidate to make baldy females that will add power and flair to your cow herd.

igenity DNA Profile Scores										
ADG	Tenderness	Marb	% Choice	YG	Fat	REA	Hfr Preg Rate	Stayability	Calving Ease	Docility
5	4	7	7	7	6	7	6	7	4	8

Lot **15** **STN ROLAND**  
 Reg # 2594370 Tattoo: Y537 BD: 03/02/11  
 BW 96 lbs BWR 95 Adj. WW: 682 lbs WWR: NA

SAS T101 SWEET MEAT HTP SVF IN DEW TIME  
 2391423 SAS SWEETS STAR R101  
 GB/SAS FULLBORE 541 SAS FULL BORE L531  
 2349371 SAS/GB JOSOPHINE

EPDs							Carcass							
CE	BW	WW	YW	MCE	MM	MWW	Stay	CW	YG	Marb	BF	REA	API	TI
5.4	2.2	33.4	50.1	13.9	1.4	18.1	21.8	-4.9	0.04	0.16	0.02	-0.02	106.6	59.8

- Dam's Production: 2 NR 100. Calving Interval 4 @ 368 days.
- Homozoyous Black and Homozoyous Polled.
- Here is another "Sweet Meat" son that was a finalist to make the Denver pen.
- This bull shares the same maternal grandsire as "Supermax" and "Cowboys." There is herd bull potential in this cow family.
- "Roland" is a great example of what "Sweet Meat" can do, produce offspring that will grow on grass and sire feeder calves that will top sales around the country.

igenity DNA Profile Scores										
ADG	Tenderness	Marb	% Choice	YG	Fat	REA	Hfr Preg Rate	Stayability	Calving Ease	Docility
4	3	5	5	4	4	6	7	7	4	6

Lot **16** **STN MAXWELL**  
 Reg # 2594368 Tattoo: Y232 BD: 02/01/11  
 BW 69 lbs Adj. WW: 431 lbs (Twin)

SAS T101 SWEET MEAT HTP SVF IN DEW TIME  
 2391423 SAS SWEETS STAR R101  
 DS MS FORTUNE 500 2325 SRS FORTUNE 500  
 232664 DS MS FULL FIGURES 211L

EPDs							Carcass							
CE	BW	WW	YW	MCE	MM	MWW	Stay	CW	YG	Marb	BF	REA	API	TI
5.9	2.4	41.1	62.2	13.0	-0.2	20.3	20.8	2.4	0.08	0.34	0.02	-0.06	117.7	68.5

- Dam's Production: 3 BWR 91, 3 NR 100. Calving Interval 4 @ 363 days.
- "Maxwell" posted a 69 lb. BW, the lightest in the sale offering.
- Dam traces to the immortal "Preferred Stock" and "Full Figures."

igenity DNA Profile Scores										
ADG	Tenderness	Marb	% Choice	YG	Fat	REA	Hfr Preg Rate	Stayability	Calving Ease	Docility
4	4	6	6	5	5	7	8	8	4	5

Lot **14** **GB/SAS SUPERSTAR Y006**  
 Reg # 2620314 Tattoo: Y006 BD: 02/15/11  
 BW NA Adj. WW: 612 lbs (ET)

SAS T101 SWEET MEAT HTP SVF IN DEW TIME  
 2391423 SAS SWEETS STAR R101  
 SAS ASF LYNETTE K531 3C FULL FIGURES C288 BLK  
 2071169 SAS LYNETTE

EPDs							Carcass							
CE	BW	WW	YW	MCE	MM	MWW	Stay	CW	YG	Marb	BF	REA	API	TI
6.7	2.0	40.2	57.8	14.8	2.1	22.2	22.2	-1.0	0.16	0.25	0.04	-0.14	116.0	66.0

- Dam's Production: 5 NR 102.
- This is a super correct and sound son of "Sweet Meat" that lines up all of the genetics behind this outstanding sire.
- His dam is powerful, deep bodied and easy fleshing. She is also the maternal granddam of "All Star," the \$7,500 top selling bull from the 2004 sale selected by Timberland Ranch of WI.
- Springers were hoping for females with this mating and instead got a female producing machine that is incredible deep bodied.

igenity DNA Profile Scores										
ADG	Tenderness	Marb	% Choice	YG	Fat	REA	Hfr Preg Rate	Stayability	Calving Ease	Docility
3	1	7	7	6	6	8	7	6	5	8

Lot **17** **SAS CHILL FACTOR**  
 Reg # 2596928 Tattoo: Y051 BD: 02/21/11  
 BW 90 lbs BWR 98 Adj. WW: 743 lbs WWR: 105

SAS T101 SWEET MEAT HTP SVF IN DEW TIME  
 2391423 SAS SWEETS STAR R101  
 SAS SWEET&SILKY RAINSLACK BOLDSTOCK142F  
 2226663 SAS SWEET EYES

EPDs							Carcass							
CE	BW	WW	YW	MCE	MM	MWW	Stay	CW	YG	Marb	BF	REA	API	TI
5.1	1.9	39.3	62.5	13.4	4.0	23.6	23.5	2.0	0.05	0.25	0.10	118.1	66.3	

- Dam's Production: 7 BWR 100, 7 NR 99. Calving Interval 7 @ 361 days.
- "Chill Factor" is stout and deep with excellent performance.
- Springer Simmentals are proud of the birth weight consistency of "Sweet Meat." It stays at the same threshold whether it is a first calf heifer or mature cow.
- Dam is 10 years old and still doing it on her own. She predominantly produces females, but her sons are exceptional.

igenity DNA Profile Scores										
ADG	Tenderness	Marb	% Choice	YG	Fat	REA	Hfr Preg Rate	Stayability	Calving Ease	Docility
4	3	7	7	6	5	8	7	8	5	7

**Lot 18 SAS BLACK POISON Y320**

Reg # 2596933 Tattoo: Y320 BD: 01/16/11  
BW 87 lbs BWR 101 Adj. WW: 693 lbs WWR: 98

SAS T101 SWEET MEAT HTP SVF IN DEW TIME  
2391423 SAS SWEETS STAR R101

SAS TONYA W32B PVE/SAS T32 DIRTY DOG  
2500855 SAS T30B TONYA

EPDs							Carcass							
CE	BW	WW	YW	MCE	MM	MWW	Stay	CW	YG	Marb	BF	REA	API	TI
7.6	0.5	28.5	45.1	15.0	1.5	15.7	22.3	-10.2	0.04	0.06	0.03	-0.03	106.5	57.0

- Dam's Production: 1 NR 98.
- Dam is a beautiful "Dirty Dog" first calf heifer. They are true female with the "Redcoat" look about them.
- "Black Poison" is the complete package offering style, muscling, and a cow family to add maternal strength.

igenity DNA Profile Scores										
ADG	Tenderness	Marb	% Choice	YG	Fat	REA	Hfr Preg Rate	Stayability	Calving Ease	Docility
3	1	6	6	6	5	8	6	7	4	5

**Lot 21 SAS BIG TUNDRA**

Reg # 2596934 Tattoo: Y536 BD: 02/05/11  
BW 87 lbs BWR 101 Adj. WW: 686 lbs WWR: 97

SAS T101 SWEET MEAT HTP SVF IN DEW TIME  
2391423 SAS SWEETS STAR R101

SAS DAWN W536 PVE/SAS T32 DIRTY DOG  
2500852 SAS T534 DONELLA

EPDs							Carcass							
CE	BW	WW	YW	MCE	MM	MWW	Stay	CW	YG	Marb	BF	REA	API	TI
7.1	0.7	29.7	46.6	15.2	2.1	16.9	22.4	-9.1	0.03	0.22	0.03	0.03	115.0	61.4

- Dam's Production: 1 NR 97.
- Dam is another "Dirty Dog" daughter and first calf heifer. She also traces to the "Donella" cow family.
- This bull is extremely deep bodied with excellent spring of rib. His muscle and bone will add value to his calves as feeder calves, fairs or as replacements.
- Sire is the \$20,000 selection of Hart Farms of SD.

igenity DNA Profile Scores										
ADG	Tenderness	Marb	% Choice	YG	Fat	REA	Hfr Preg Rate	Stayability	Calving Ease	Docility
4	4	5	5	4	4	7	7	6	4	7

**Lot 19 GB/SAS MEAT Y002**

Reg # 2620316 Tattoo: Y002 BD: 03/02/11  
BW 97 lbs BWR 96 Adj. WW: 653 lbs WWR: 95

SAS T101 SWEET MEAT HTP SVF IN DEW TIME  
2391423 SAS SWEETS STAR R101

SAS/GB S JOE R002 SAS SMOKIN JOE  
2392559 SAS REBECCA L002

EPDs							Carcass							
CE	BW	WW	YW	MCE	MM	MWW	Stay	CW	YG	Marb	BF	REA	API	TI
5.1	2.2	35.7	59.7	14.0	0.8	18.6	22.0	10	0.07	0.19	0.04	0.14	110.0	62.0

- Dam's Production: 2 BWR 94, 1 NR 95. Calving Interval 3 @ 367 days.
- Dam is a "Smokin Joe" daughter that has done a great job in South Dakota.
- "Meat" lives up to his name, he is heavy muscled and will add performance and carcass quality to his progeny.
- Sire consistently produced "no holes" cattle.

igenity DNA Profile Scores										
ADG	Tenderness	Marb	% Choice	YG	Fat	REA	Hfr Preg Rate	Stayability	Calving Ease	Docility
4	4	6	6	4	4	6	7	6	4	8

**Lot 22 KFA MR CARGO**

Reg # 2600467 Tattoo: Y156 BD: 03/18/11

SAS T101 SWEET MEAT HTP SVF IN DEW TIME  
2391423 SAS SWEETS STAR R101

KFA MISS CORA 3C MACHO M450 BZ  
2520959 CADDY

EPDs							Carcass							
CE	BW	WW	YW	MCE	MM	MWW	Stay	CW	YG	Marb	BF	REA	API	TI
4	1.2	34.6	53.0	11.2	-2.4	14.9	NA	-4.7	0.06	0.28	0.03	0.00	102.4	63.1

- "Cargo" has performed well and is extremely quiet. He, like all the bulls offered in the sale, is guaranteed for disposition.
- "Sweet Meat" blends the sire of his sire with the muscle shape, stoutness and body mass of "All Star."
- Dam's paternal grandsire is the infamous Meyer Ranch 734.

igenity DNA Profile Scores										
ADG	Tenderness	Marb	% Choice	YG	Fat	REA	Hfr Preg Rate	Stayability	Calving Ease	Docility
3	4	6	6	7	6	8	6	6	4	7

**Lot 20 SAS BLACK SILK**

Reg # 2621015 Tattoo: Y041 BD: 02/21/11  
BW 96 lbs BWR 93 Adj. WW: 705 lbs

SAS T101 SWEET MEAT HTP SVF IN DEW TIME  
2391423 SAS SWEETS STAR R101

SAS SILKY W051 SAS/ASF ALL STAR  
2500799 SAS SWEET&SILKY

EPDs							Carcass							
CE	BW	WW	YW	MCE	MM	MWW	Stay	CW	YG	Marb	BF	REA	API	TI
4.7	2.6	45.2	70.7	13.2	2.7	25.3	22.0	7.8	0.15	0.20	0.05	0.06	112.0	67.0

- This is a terrific bull who got off to a rough start. His dam lost weight and struggled after calving. Through good management Jeff was able to get her back on track, but she did not milk like she is capable of for this guy.
- "Silky" is one of the best "All Star" females around and this cow family has never had a let down for Jeff.

igenity DNA Profile Scores										
ADG	Tenderness	Marb	% Choice	YG	Fat	REA	Hfr Preg Rate	Stayability	Calving Ease	Docility
3	3	5	5	5	4	8	6	7	4	8

**Lot 23 KFA MR DESHAWN**

Reg # 2600465 Tattoo: Y13 BD: 03/16/21

SAS T101 SWEET MEAT HTP SVF IN DEW TIME  
2391423 SAS SWEETS STAR R101

KFA DARMA TRIPLE C MAJIC MAN M211  
2483131 KFA MISS CARMA

EPDs							Carcass							
CE	BW	WW	YW	MCE	MM	MWW	Stay	CW	YG	Marb	BF	REA	API	TI
4.9	2.2	40.5	64.5	13.6	-1.4	18.8	19.8	3.6	0.04	0.22	0.03	0.15	108.8	65.4

- Dam is sired by a bull known for throwing calves with outstanding phenotype and soundness. She also counts Meyer Ranch 734 as her paternal grandsire.
- Sire is consistently siring easy calving, heavy weaning progeny.

igenity DNA Profile Scores										
ADG	Tenderness	Marb	% Choice	YG	Fat	REA	Hfr Preg Rate	Stayability	Calving Ease	Docility
4	1	7	7	7	6	5	6	6	7	5

**Lot 24 SAS Y912**

Reg # 2596937 Tattoo: Y912 BD: 03/17/11  
BW 82 lbs BWR 107 Adj. WW: 610 lbs WWR: 86

SAS T101 SWEET MEAT HTP SVF IN DEW TIME  
2391423 SAS SWEETS STAR R101

SAS MAGNOLIA W912 NLC FORTUNATE SON 100N  
2508414 SAS T142 MAGDELLINE

EPDs							Carcass							
CE	BW	WW	YW	MCE	MM	MWW	Stay	CW	YG	Marb	BF	REA	API	TI
7.1	0.6	23.6	39.6	13.7	2.5	14.4	21.4	-13.1	0.00	0.30	0.02	-0.02	115.7	60.2

- Dam's Production: 1 NR 86.
- Here is another bull that had his 205 day wt. affected by a set back with his dam not milking after calving, but he has gone on to more than make up for it since and is turning into quite the bull.
- Study this bull closely, the pedigree and maternal strength from this cow family is bred in. Here might be one of the best buys in the sale.
- Sire is known for the consistent quality and depth of body in his offspring.

igenity DNA Profile Scores										
ADG	Tenderness	Marb	% Choice	YG	Fat	REA	Hfr Preg Rate	Stayability	Calving Ease	Docility
6	6	6	6	8	7	5	7	6	4	7

**Lot 25 SAS SAM Y406**

Reg # 2596932 Tattoo: Y406 BD: 03/16/11  
BW 91 lbs Adj. WW: 661 lbs (ET)

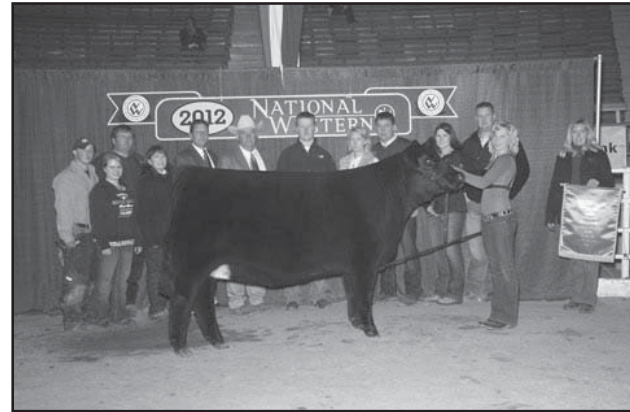
SAS T101 SWEET MEAT HTP SVF IN DEW TIME  
2391423 SAS SWEETS STAR R101

SAS SAMANTHA G&L BLACKFOOT 716D  
1933830 ER MISS MAX63 30B

EPDs							Carcass							
CE	BW	WW	YW	MCE	MM	MWW	Stay	CW	YG	Marb	BF	REA	API	TI
7.0	1.4	35.1	55.7	14.8	-0.9	16.6	21.5	-2.7	0.08	0.22	0.03	-0.06	113.9	63.4

- Dam's Production: 9 NR 101.
- "Sam" is another bull that is doing it on his own and maturing into a very nice baldy bull with plenty of eye appeal.
- Dam transmits a big hip and plenty of depth of flank, just like the rest of the "Samantha" cow family.
- Sire is featured with Hart Farms and has become known for his sound and consistent calves.

igenity DNA Profile Scores										
ADG	Tenderness	Marb	% Choice	YG	Fat	REA	Hfr Preg Rate	Stayability	Calving Ease	Docility
3	4	6	6	7	6	8	6	6	4	7



**JSMF FLICK OF GLITTER**

Grand Champion Female Overall 2012 National Western Stock Show. Congratulations to Kurt and Amy Steinbronn, and Eric and Bridget Arthur.

## SPRINGER SIMMENTALS SENIOR HERDSIRE



BD: 1-26-09 ASA# 2538002

Twin - Chief Prince 203P  
**R PLUS BLACKOUT**  
9707463 Miss R Plus 5083R

R Plus Blackedge  
**MISS R PLUS 7026T**  
9707462 Miss R Plus 5121R

CE	BW	WW	YW
10.2	-0.7	40.2	61.6
MCE	Milk	MWW	Stay
12.4	3.6	23.7	15.2
CW	YG	MARB	BF
-2.6	0.02	0.12	0.01
REA	Shr	API	TI
-0.01	-0.24	105.7	67.7

- 3.4 Marb, ratio 127, REA 14.0
- Homozygous Black & Homozygous Polled
- Calves out of this sire are special! Sons have presence and the females have pizzazz, your eye is naturally drawn to these calves.
- These calves are very aggressive at birth, nursing without assistance within minutes. They get up and go straight to work at the udder.
- "Yukon" calves are extremely hairy and hearty. The disposition is outstanding on these calves as well. When the Springers went to work with the Denver bulls by "Yukon," they stood calmly the first time they were tied, washed the second and led the third time.

# R Plus KING OF THE yukon owners

R Plus Simmentals  
Marlin Leblanc Family  
Estevean, Sask

Springer Simmentals  
Jeff & Lynda Springer Family  
Cresco, IA

Little Sioux Cattle Co  
Jon Weaver  
Onawa, IA

Denning Farms  
Mike & Robyn Denning  
McGregor, IA

For Semen Packages Contact 641-330-6654

## KING OF THE YUKON SONS



**SAS AIR FORCE 1**  
Lot 28

Lot **27** **SAS/OLD 6 JOHNNY KOOL**  
Reg # 2596943 Tattoo: Y442 BD: 03/10/11  
BW 81 lbs BWR 108 Adj. WW: 752 lbs WWR: 106

R PLUS KING OF THE YUKON  
2538002  
SAS BLACK BEAUTY  
2249972

R PLUS BLACKOUT  
MISS R PLUS 7026T  
MEYER RANCH 734  
SK MISS TRAVELER ELBA E9

EPDs										Carcass				
CE	BW	WW	YW	MCE	MM	MWW	Stay	CW	YG	Marb	BF	REA	API	TI
5.3	-0.7	32.7	55.0	7.5	1.5	17.8	NA	-6.1	0.09	0.22	0.03	-0.11	98.5	63.5

- Dam's Production: 1 NR 106.
- Homozygous Black and Homozygous Polled.
- This might be the most aptly named bull in the sale. He is one cool cat. He combines extreme depth of body, tremendous bone and a big foot with a wonderful, extended front end.
- Dam is also the mother of "Womack," the \$31,000 high selling bull in the 2011 "Sale of Value Based Genetics" selected by Brecon Farms of IA.
- This "Yukon" son has the potential to be an elite breeding piece, as well as Show Bull of the Year with the right home.

igenity DNA Profile Scores										
ADG	Tenderness	Marb	% Choice	YG	Fat	REA	Hfr Preg Rate	Stayability	Calving Ease	Dolcility
4	3	6	6	5	5	7	7	7	5	8

Lot **28** **SAS AIR FORCE 1**  
Reg # 2596935 Tattoo: Y225 BD: 02/11/11  
BW 83 lbs BWR 106 Adj. WW: 647 lbs WWR: 91

R PLUS KING OF THE YUKON  
2538002  
SAS CHASTITY W224  
2506848

R PLUS BLACKOUT  
MISS R PLUS 7026T  
SAS T101 SWEET MEAT  
SAS T223 QUEENIE

EPDs										Carcass				
CE	BW	WW	YW	MCE	MM	MWW	Stay	CW	YG	Marb	BF	REA	API	TI
10.4	-1.2	25.2	40.4	14.5	4.1	16.7	18.4	-15.5	0.07	0.39	0.03	-0.19	122.1	65.9

- Dam's Production: 1 NR 91.
- Homozygous Black and Homozygous Polled.
- Dam is a representative of the "Queenie" cow family that is also found in the pedigree of Lot 6. You can easily see the consistency of quality of this cow family.
- Every mating that the Springer operation commits to is done with the end goal of improving the cow herd. Herd bulls with all the "bells and whistles" originate from outstanding females.
- "Yukon" has done an admirable job of siring calves that are vigorous and aggressive at birth. They get up and head straight to the udder.
- "Air Force 1" has herd bull potential written all over him.

igenity DNA Profile Scores										
ADG	Tenderness	Marb	% Choice	YG	Fat	REA	Hfr Preg Rate	Stayability	Calving Ease	Dolcility
5	6	6	6	5	4	8	8	7	4	7



**SAS/OLD 6 JOHNNY KOOL • LOT 27**



**OLD6/SAS WOMACK W442**  
\$31,500 maternal brother to Lot 27



**SAS LICORICE S532**  
Grandam of Lots 29 and 30

**Lot 31** **STN HUXLEY**  
Reg # 2594369 Tattoo: Y815 BD: 02/24/11  
BW 82 lbs Adj. WW: 603 lbs

R PLUS KING OF THE YUKON  
2538002  
GB/SAS T815 TILLY  
2391472

R PLUS BLACKOUT  
MISS R PLUS 7026T  
SAS PBEEF R530  
SAS TILLY

EPDs											Carcass				
CE	BW	WW	YW	MCE	MM	MWW	Stay	CW	YG	Marb	BF	REA	API	TI	
4.8	1.9	33.7	56.1	12.6	7.2	24.0	14.8	-1.5	0.00	0.04	0.00	-0.01	87.2	58.3	

- Dam's Production: 2 BWR 97, 2 NR 103. Calving Interval 3 @ 349 days.
- Dam is from a cow family that has been one of the most consistent producers in South Dakota. "Huxley" should really help power up your calf crop.
- Another great attribute this sire seems to pass along to his calves is health and disposition. Jeff has noticed "Yukon" calves never seem to be sick and are extremely easy to work with.
- "Y815" is one of the bigger topped sons of "Yukon" in the sale with excellent rib shape and power.

igenity DNA Profile Scores										
ADG	Tenderness	Marb	% Choice	YG	Fat	REA	Hfr Preg Rate	Stayability	Calving Ease	Docility
4	3	7	7	6	5	6	5	7	5	4

**Lot 32** **SAS IRON HORSE**  
Reg # 2596931 Tattoo: Y453 BD: 03/17/11  
BW 78 lbs BWR 111 Adj. WW: 699 lbs WWR: 98

R PLUS KING OF THE YUKON  
2538002  
SAS HOLLY U453  
2464211

R PLUS BLACKOUT  
MISS R PLUS 7026T  
TNT HUMMER H3 R360  
RAINS BLK 453M

EPDs											Carcass				
CE	BW	WW	YW	MCE	MM	MWW	Stay	CW	YG	Marb	BF	REA	API	TI	
10.2	-1.5	27.7	47.2	13.6	8.4	22.3	18.0	-11.8	-0.07	0.40	0.01	0.16	124.6	69.3	

- Dam's Production: 2 NR 101.
- This cow family produced "Midnight Special," putting Jenkins Cattle Co. of GA on the map. The calves from this maternal background are typically exceptional carcass cattle. They always come light with average or above growth.
- This guy is moderate framed with all of the above.
- "Iron Horse" is the only baldy "Yukon" son in the sale offering.

igenity DNA Profile Scores										
ADG	Tenderness	Marb	% Choice	YG	Fat	REA	Hfr Preg Rate	Stayability	Calving Ease	Docility
3	3	6	6	5	5	6	8	7	4	6

**Lot 33** **SAS BLACK JACKET**  
Reg # 2596926 Tattoo: Y420 BD: 03/27/11  
BW 90 lbs BWR 98 Adj. WW: 637 lbs WWR: 90

R PLUS KING OF THE YUKON  
2538002  
SAS PBEEF R420  
2293603

R PLUS BLACKOUT  
MISS R PLUS 7026T  
SRS J914 PREFERRED BEEF  
SAS DENISE

EPDs											Carcass				
CE	BW	WW	YW	MCE	MM	MWW	Stay	CW	YG	Marb	BF	REA	API	TI	
7.9	0.2	28.0	50.3	10.2	5.9	19.9	17.9	-7.3	0.03	0.18	0.02	-0.04	106.3	61.0	

- Dam's Production: 4 BWR 100, 4 NR 100.
- Homozygous Black and Homozygous Polled.
- Dam is a "Preferred Beef" daughter that offers an outcross to most of the "Dream On" genetics currently used.
- "R420" traces back to "Spot Fire," a bull with both the "Lynette" and "Silky" cow families in his lineage, offering the potential for a phenomenal female producer.
- "Black Jacket" may offer the most style of all the "Yukon" calves. He is exceptionally sound, deep and really has a look about him.

igenity DNA Profile Scores										
ADG	Tenderness	Marb	% Choice	YG	Fat	REA	Hfr Preg Rate	Stayability	Calving Ease	Docility
6	4	6	6	6	6	6	9	6	5	8

We are extremely proud that you will find this set of bulls will consistently have some of the largest scrotal measurements you will find anywhere. Numbers are actual, not adjusted!



**SAS BLACK JACKET • LOT 33**

## SAS H3 TITAN SONS

**Lot 34** **SAS SHUT OUT**  
Reg # 2596925 Tattoo: Y304 BD: 03/03/11  
BW 91 lbs BWR 97 Adj. WW: 695 lbs WWR: 98

R PLUS KING OF THE YUKON  
2538002  
SAS SWEETUMS  
2500819

R PLUS BLACKOUT  
MISS R PLUS 7026T  
SAS T101 SWEET MEAT  
BR MISS ARAPAHOE 354N

EPDs											Carcass				
CE	BW	WW	YW	MCE	MM	MWW	Stay	CW	YG	Marb	BF	REA	API	TI	
8.6	0.2	41.7	63.8	12.5	1.2	22.0	19.0	0.1	-0.03	0.09	0.02	0.25	108.9	66.5	

- Dam's Production: 1 BWR 97, 1 NR 98.
- Dam is a first calf daughter of "Sweet Meat" that has always been one of Jeff's favorites. This cow family moves very well. They have extra internal dimension and beautiful udders.
- "Shut Out" follows that same pattern along with great bone work, large hooves and a huge top.

igenity DNA Profile Scores										
ADG	Tenderness	Marb	% Choice	YG	Fat	REA	Hfr Preg Rate	Stayability	Calving Ease	Docility
4	3	6	6	6	6	5	6	7	4	5



**STN LIBERTY • LOT 35**

**Lot 35** **STN LIBERTY**  
Reg # 2594367 Tattoo: Y422 BD: 02/01/11  
BW 93 lbs BWR 98 Adj. WW: 669 lbs

SAS H3 TITAN  
2464229

SAS ALL STAR U422  
2464267

TNT HUMMER H3 R360  
N534

SAS/ASF ALL STAR  
SAS PBEEF R420

EPDs											Carcass				
CE	BW	WW	YW	MCE	MM	MWW	Stay	CW	YG	Marb	BF	REA	API	TI	
5.5	2.3	39.7	67.7	12.2	7.4	27.2	21.7	5.9	0.13	0.17	0.03	-0.08	110.5	64.5	

- Dam's Production: 2 BWR 98, 1 NR 109. Calving Interval 2 @ 357 days.
- Homozygous Black and Homozygous Polled.
- This is one of the best bulls in the sale! He is extremely powerful and deep.
- "Liberty" was in final contention for the Denver pen. He will add power and performance to your calf crop or produce replacements that will highlight your cow herd.
- Dam is an "All Star" daughter that produced one of the heaviest bulls in last year's sale.
- Sire is part of the ORigen AI lineup and has been used heavily at Graesser Brothers. He is also the sire of "Baracuda."

igenity DNA Profile Scores										
ADG	Tenderness	Marb	% Choice	YG	Fat	REA	Hfr Preg Rate	Stayability	Calving Ease	Docility
5	3	7	7	7	6	5	7	6	4	6



**SAS H3 TITAN**

**Ref Sire** **SAS H3 TITAN**  
Reg # 2464229 Tattoo: U534 BD: 03/27/08

TNT HUMMER H3 R360  
2321773

N534  
2228812

HC HUMMER 12M  
TNT MISS DEATRA K96

SAS FULL BORE L531  
SAS VALLEY GIRL

EPDs											Carcass				
CE	BW	WW	YW	MCE	MM	MWW	Stay	CW	YG	Marb	BF	REA	API	TI	
4.9	2.5	42.5	69.2	14.3	5.2	26.4	24.1	6.9	0.00	0.11	0.00	0.08	112.2	64.5	

- He is soft made in his appearance and sires extremely big hipped cattle with plenty of growth. He is a low 6 frame bull that will add a lot of muscle and top shape into his offspring while maintaining their correctness and rib shape.
- His dam "N534," has proven herself with offspring that excel in performance and are extremely eye appealing. Udder quality and teat size are near ideal throughout this cow family.
- Sire of "Baracuda," the \$15,500 2nd high selling bull in last year's sale, selected by Steinbronn Farms of Maynard, IA.
- Sons of "Titan" offer outcross opportunities to "Sweet Meat," "All Star" and "Rio Bravo" daughters.

**Lot 36** **GB/SAS TITAN Y864**  
Reg # 2620315 Tattoo: Y864 BD: 04/05/11  
BW 99 lbs BWR 94 Adj. WW: 658 lbs WWR: 96

SAS H3 TITAN  
2464229

GB/SAS MAXI 864  
2488819

TNT HUMMER H3 R360  
N534

G&L BLACKFOOT 716D  
SAS MAXI

EPDs											Carcass				
CE	BW	WW	YW	MCE	MM	MWW	Stay	CW	YG	Marb	BF	REA	API	TI	
2.8	3.1	35.6	60.7	12.7	6.7	24.5	21.6	3.0	0.04	0.09	0.01	-0.01	100.0	59.0	

- Dam's Production: 3 BWR 93, 2 NR 99. Calving Interval 3 @ 370 days.
- Dam is out of the "Maxi" cow family that produced "Perfect Poison."
- Another added benefit of "Titan" sons, they are very good scrotaled bulls.
- "Y864" is stout and big hipped, just like all the "Titans."

igenity DNA Profile Scores										
ADG	Tenderness	Marb	% Choice	YG	Fat	REA	Hfr Preg Rate	Stayability	Calving Ease	Docility
4	3	6	6	5	6	6	7	6	4	4

**Lot 37**

**GB/SAS TITAN Y634**  
 Reg # 2620311 Tattoo: Y634 BD: 03/25/11  
 BW 97 lbs BWR 96 Adj. WW: 702 lbs WWR: 102

SAS H3 TITAN TNT HUMMER H3 R360  
 2464229 N534  
 SAS/GB MAGNOLIA R634 SAS FULL BORE L531  
 2293615 KNIGHTS BLK MAGNOLIA 142

EPDs									Carcass					
CE	BW	WW	YW	MCE	MM	MWW	Stay	CW	YG	Marb	BF	REA	API	TI
4.9	2.2	34.4	57.7	13.5	6.4	23.6	25.0	-0.1	-0.05	-0.04	0.00	0.19	104.0	57.0

- Dam's Production: 5 BWR 98, 4 NR 99. Calving Interval 5 @ 372 days.
- Dam stems from the highest producing cow family at Graesser Brother's, not only in production but value as well. This maternal lineage produced two bulls in the sale last year, including "Black Challenger," the \$8,500 4th top selling bull.
- Three full sibling sisters to "R634" are in production in South Dakota and do their part to keep the "Denver" bull pen full and raise the next replacement females.
- These full brothers are all just as stout and powerful as the bloodlines behind them. What a chance to package a herd bull corps to generate an extremely uniform calf crop. They are multiple generations of homozygous black and polled on both sides of their pedigree.

igenity DNA Profile Scores											
ADG	Tenderness	Marb	% Choice	YG	Fat	REA	Hfr Preg Rate	Stayability	Calving Ease	Docility	
4	1	6	6	4	5	6	6	6	4	5	

**Lot 38**

**GB/SAS TITAN Y635**  
 Reg # 2620313 Tattoo: Y635 BD: 03/17/11  
 BW 97 lbs BWR 96 Adj. WW: 775 lbs WWR: 113

GB/SAS TITAN X033 SAS H3 TITAN  
 2548557 GB/SAS 033 STAR  
 GB/SAS T634 MAGNOLIA LCHMAN LUCKY BUCK 7049C  
 2291469 KNIGHTS BLK MAGNOLIA 142

EPDs									Carcass					
CE	BW	WW	YW	MCE	MM	MWW	Stay	CW	YG	Marb	BF	REA	API	TI
4.5	2.1	42.4	74.3	14.1	3.4	24.6	25.6	9.6	-0.07	0.06	0.00	0.29	114.0	64.0

- Dam's Production: 3 BWR 94, 2 NR 106. Calving Interval 3 @ 375 days.
- Dam stems from the highest producing cow family at Graesser Brother's, not only in production but value as well. This maternal lineage produced two bulls in the sale last year, including "Black Challenger," the \$8,500 4th top selling bull.
- Three maternal sisters to the dam are in production in South Dakota and do their part to keep the "Denver" bull pen full and raise the next replacement females.
- These full brothers are all just as stout and powerful as the bloodlines behind them. What a chance to package a herd bull corps to generate an extremely uniform calf crop. They are multiple generations of homozygous black and polled on both sides of their pedigree.

igenity DNA Profile Scores											
ADG	Tenderness	Marb	% Choice	YG	Fat	REA	Hfr Preg Rate	Stayability	Calving Ease	Docility	
5	4	6	6	6	6	6	7	8	3	6	

**Lot 39**

**GB/SAS TITAN Y015**  
 Reg # 2620317 Tattoo: Y015 BD: 03/28/11  
 BW 95 lbs BWR 99 Adj. WW: 720 lbs WWR: 105

SAS H3 TITAN TNT HUMMER H3 R360  
 2464229 N534  
 SAS/GB MAGNOLIA R015 SAS FULL BORE L531  
 2293553 KNIGHTS BLK MAGNOLIA 142

EPDs									Carcass					
CE	BW	WW	YW	MCE	MM	MWW	Stay	CW	YG	Marb	BF	REA	API	TI
5.3	1.7	35.3	58.8	13.7	6.0	23.6	25.0	-0.3	-0.03	-0.02	0.01	0.18	106.0	58.0

- Dam's Production: 5 BWR 99, 4 NR 98. Calving Interval 5 @ 375 days.
- Dam stems from the highest producing cow family at Graesser Brother's, not only in production but value as well. This maternal lineage produced two bulls in the sale last year, including "Black Challenger," the \$8,500 4th top selling bull.
- Three maternal sisters to the dam are in production in South Dakota and do their part to keep the "Denver" bull pen full and raise the next replacement females.
- These full brothers are all just as stout and powerful as the bloodlines behind them. What a chance to package a herd bull corps to generate an extremely uniform calf crop. They are multiple generations of homozygous black and polled on both sides of their pedigree.

igenity DNA Profile Scores											
ADG	Tenderness	Marb	% Choice	YG	Fat	REA	Hfr Preg Rate	Stayability	Calving Ease	Docility	
3	1	8	8	6	6	5	5	6	4	6	



**GB/SAS TITAN Y634 • LOT 37**



**KNIGHTS BLACK MAGNOLIA 142**

Grandam of Lots 37-39

**All bulls are guaranteed not to need their feet trimmed unless injured or we'll pay for it!**

**SAS BARRACUDA X922**  
 The Homo Black and Homo Polled outcross sire to use for 2012. Typical of the Titan sons available in the sale. He was the 2nd high seller in 2011 to Steinbronn Farms. Semen available through Steinbronn Farms or Springer Simmentals.



**SAS 6 SHOT • LOT 40**

**Lot 40**

**SAS 6 SHOT**  
 Reg # 2596948 Tattoo: Y331 BD: 02/16/11  
 BW 102 lbs BWR 84 Adj. WW: 694 lbs WWR: 98

SAS H3 TITAN TNT HUMMER H3 R360  
 2464229 N534  
 SAS STARLIGHT U330 SAS/ASF ALL STAR  
 2548525 SAS SERENA M031

EPDs									Carcass					
CE	BW	WW	YW	MCE	MM	MWW	Stay	CW	YG	Marb	BF	REA	API	TI
1.4	4.2	40.5	70.6	10.5	9.1	29.3	24.2	10.6	0.10	0.12	0.02	-0.02	104.8	60.9

- Dam's Production: 1 BWR 84, 1 NR 98.
- Dam is a full sister to "Starlight," the outstanding donor cow at Hart Farms of SD. Springer's have retained a maternal sister to this lot sired by "Dirty Dog" that looks fantastic and has them excited about future calves from her.
- The "Serena" cow family has been highly productive and trouble free.
- "6 Shot" is very stout and has the appearance to be trouble free and productive just like the bottom side of his pedigree.
- Sire is producing extremely big hipped cattle with plenty of growth.

igenity DNA Profile Scores											
ADG	Tenderness	Marb	% Choice	YG	Fat	REA	Hfr Preg Rate	Stayability	Calving Ease	Docility	
4	4	4	4	5	4	5	6	7	4	6	

**Lot 41**

**GB/SAS TITAN Y220**  
 Reg # 2620320 Tattoo: Y220 BD: 04/19/11  
 BW 98 lbs BWR 95 Adj. WW: 725 lbs WWR: 113

SAS H3 TITAN TNT HUMMER H3 R360  
 2464229 N534  
 GB/SAS MACK U219 RHS MACK CCS BLACK JOKER  
 2548525 SAS/GB S JOE R219

EPDs									Carcass					
CE	BW	WW	YW	MCE	MM	MWW	Stay	CW	YG	Marb	BF	REA	API	TI
4.2	2.8	46.4	77.4	12.5	3.9	27.1	22.9	12.3	0.01	0.02	0.01	0.25	105.0	64.0

- Dam's Production: 1 NR 113.
- Maternal grandam has been a top notch performer for Springer's and is entering their prestigious donor pen.
- "Y220" is a super individual and has an outcross pedigree that contains stout, powerful and trouble free cattle.

igenity DNA Profile Scores											
ADG	Tenderness	Marb	% Choice	YG	Fat	REA	Hfr Preg Rate	Stayability	Calving Ease	Docility	
5	4	6	6	6	5	6	7	6	5	7	



**PVF/SAS T32 DIRTY DOG**

Ref Sire **D**

**PVF/SAS T32 DIRTY DOG**  
 Reg # 2391415 Tattoo: T32 BD: 01/30/07

BOZ REDCOAT HERCULES 538P  
 1586945 BOZ RED LADY  
 KNIGHTS BLK MAGNOLIA 142 PVF-BF-BF26 BLACK JOKER  
 2148504 KNIGHTS BLK MAGNOLIA-422D

EPDs									Carcass					
CE	BW	WW	YW	MCE	MM	MWW	Stay	CW	YG	Marb	BF	REA	API	TI
8.1	-1.4	20.5	41.8	16.9	8.8	19.0	22.3	-14.4	-0.09	0.00	0.02	0.26	106.6	55.0

- "Dirty Dog" is the Springers choice for first calf heifers, he is a guaranteed calving ease bull.
- His progeny have been excellent quality, problem free and vigorous at birth. He compliments "Sweet Meat" first calf heifers well.
- Daughters have exceptional volume, perfect udder and that "Magnolia" mothering ability. They are exquisite phenotypically.

**Lot 42**

**GB/SAS DOG Y934**  
 Reg # 2620319 Tattoo: Y934 BD: 03/03/11  
 BW 103 lbs BWR 90 Adj. WW: 707 lbs WWR: 103

PVF/SAS T32 DIRTY DOG BOZ REDCOAT  
 2391415 KNIGHTS BLK MAGNOLIA 142  
 GB/SAS LYNETTE W932 RAB LUCKY BUCK K516  
 2508622 SAS LYNETTE

EPDs									Carcass					
CE	BW	WW	YW	MCE	MM	MWW	Stay	CW	YG	Marb	BF	REA	API	TI
7.3	1.1	30.5	54.2	14.1	6.8	22.0	21.0	-3.6	-0.02	0.01	0.01	0.12	102.0	58.0

- Dam's Production: 1 BWR 90, 1 NR 103.
- Dam is a terrific first calf heifer back to the grandmother of "All Star."
- Sire has been described by many as a must use sire for 2012.
- "Y934" is a very complete bull with a unique pedigree.

igenity DNA Profile Scores											
ADG	Tenderness	Marb	% Choice	YG	Fat	REA	Hfr Preg Rate	Stayability	Calving Ease	Docility	
4	3	6	6	5	6	5	8	5	6	7	

# DIRTY DOG SONS



## SAS EXECUTIVE POWER

Lot 43

Lot **43** Reg # 2596942 Tattoo: Y119 BD: 01/24/11  
BW 87 lbs BWR 101 Adj. WW: 762 lbs WWR: 107

PVF/SAS T32 DIRTY DOG BOZ REDCOAT  
2391415 KNIGHTS BLK MAGNOLIA 142  
SAS STAR FORTUNE W119 MR NLC SUPERIOR S6018  
2500879 SAS SWEETS STAR R101 SAS SWEETS STAR R101

EPDs													Carcass			
CE	BW	WW	YW	MCE	MM	MWW	Stay	CW	YG	Marb	BF	REA	API	TI		
7.0	0.1	33.0	58.7	15.8	9.0	25.4	22.0	-2.5	-0.09	0.06	0.01	0.32	109.8	61.9		

- Dam's Production: 1 NR 107.
- Homozygous Black and Homozygous Polled.
- Dam is a first calf heifer by "Star," the dam of "Sweet Meat."
- Sire is a guaranteed calving ease bull that is producing sons that look to be in the same vein.
- "Executive Power" is very moderate framed and looks like an impressive spread bull. Hands in the air on this one because although he is in the sale, Jeff thinks so highly of him, he is the front runner to breed his replacement heifers to. He carries a little extra round to his muscle pattern like the "Superior" cattle do, but he carries it deep into his hock and will certainly add value to feeder or fat cattle.

igenity DNA Profile Scores										
ADG	Tenderness	Marb	% Choice	YG	Fat	REA	Hfr Preg Rate	Stayability	Calving Ease	Docility
5	4	8	8	6	6	7	6	6	5	6

Lot **44** Reg # 2596940 Tattoo: Y933 BD: 02/08/11  
BW 97 lbs BWR 90 Adj. WW: 589 lbs WWR: 83

PVF/SAS T32 DIRTY DOG BOZ REDCOAT  
2391415 KNIGHTS BLK MAGNOLIA 142  
SAS LICORICE W933 SAS T101 SWEET MEAT  
2500834 SAS LICORICE S332

EPDs													Carcass			
CE	BW	WW	YW	MCE	MM	MWW	Stay	CW	YG	Marb	BF	REA	API	TI		
5.0	1.6	25.2	46.5	14.2	4.6	17.3	22.9	-7.3	0.01	0.16	0.03	0.12	108.0	56.5		

- Dam's Production: 1 BWR 90, 1 NR 83.
- Dam was born a twin and was bottle fed. As a result she stayed smaller statured and Springer's decided on "Dirty Dog" for a guaranteed live calf.
- "LJ" certainly did not disappoint. He has continued to come on after weaning and would make a great heifer bull.

igenity DNA Profile Scores										
ADG	Tenderness	Marb	% Choice	YG	Fat	REA	Hfr Preg Rate	Stayability	Calving Ease	Docility
4	3	7	7	6	6	7	6	5	5	6

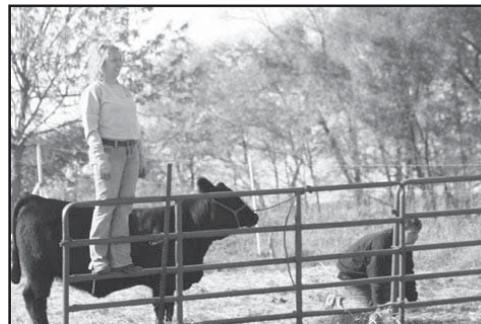
Lot **45** Reg # 2596944 Tattoo: Y048 BD: 03/16/11  
BW 81 lbs BWR 108 Adj. WW: 657 lbs WWR: 93

PVF/SAS T32 DIRTY DOG BOZ REDCOAT  
2391415 KNIGHTS BLK MAGNOLIA 142  
SAS SWEETUMS SAS T101 SWEET MEAT  
2500875 SAS/GB SWEETIE BEAR

EPDs													Carcass			
CE	BW	WW	YW	MCE	MM	MWW	Stay	CW	YG	Marb	BF	REA	API	TI		
9.3	-1.2	23.2	42.4	16.5	8.8	20.4	22.6	-14.0	-0.11	0.02	0.00	0.17	110.0	57.0		

- Dam's Production: 1 NR 93.
- Dam was hampered after calving with suspected hardware issues. She bred back on time but did not milk to her full potential early on.
- Jeff thinks "Y048" will make a great calving ease prospect with average or better growth. The genetics are there to be a great herd sire.

igenity DNA Profile Scores										
ADG	Tenderness	Marb	% Choice	YG	Fat	REA	Hfr Preg Rate	Stayability	Calving Ease	Docility
2	4	5	5	7	6	7	5	7	5	7



KURT AND AMY HELPING WITH PICTURES

# SAS BLACK EAGLE SONS



## SAS BLACK EAGLE

Ref Sire **E** SAS BLACK EAGLE  
Reg # 2500873 Tattoo: W023 BD: 03/13/09

SAS T101 SWEET MEAT HTP SVF IN DEW TIME  
2391423 SAS SWEETS STAR R101  
SAS/GB SWEETIE BEAR ASR LITTLE BEAR L126  
2255604 SAS SWEET EYES

EPDs													Carcass			
CE	BW	WW	YW	MCE	MM	MWW	Stay	CW	YG	Marb	BF	REA	API	TI		
8.3	0.5	29.2	48.3	15.3	9.2	23.8	22.9	-8.2	-0.05	0.40	0.01	0.11	128.6	67.4		

- Black Eagle is owned by Ken and Amy Steinbronn and Springer Simmentals was fortunate enough to share a pasture with them to benefit from these great genetics.
- Black Eagle has surpassed Springer Simmentals' expectations. One of the lead heifers for their heifer pens, Rapunzal, is a Black Eagle daughter and was singled out by many as a super cow prospect.
- He came out of a poor recip herd and took a while to come into himself. Most of his 2011 calf crop were heifers and he was used as cleanup bull at Springers, but we think you will like his sons. He'll be on display sale day so you can be the judge.

igenity DNA Profile Scores										
ADG	Tenderness	Marb	% Choice	YG	Fat	REA	Hfr Preg Rate	Stayability	Calving Ease	Docility
4	3	4	4	7	7	5	7	6	5	6

Lot **46** Reg # 2596941 Tattoo: Y134 BD: 03/18/11  
BW 93 lbs BWR 94 Adj. WW: 649 lbs WWR: 91

SAS BLACK EAGLE SAS T101 SWEET MEAT  
2500873 SAS/GB SWEETIE BEAR  
SAS SAMANTHA W134 KLER RENEGADE  
2500829 SAS SAMANTHA S028

EPDs													Carcass			
CE	BW	WW	YW	MCE	MM	MWW	Stay	CW	YG	Marb	BF	REA	API	TI		
6.5	1.1	30.6	54.9	12.2	4.3	19.6	21.8	-3.2	0.09	0.31	0.04	-0.01	118.6	64.0		

- Dam's Production: 1 BWR 94, 1 NR 91.
- Dam is a first calf heifer that traces back to the "Samantha" cow family.
- "Black Eagle" is also the sire of "Rapunzal," the lead heifer in one of Springer's Pen of Three Heifers exhibited in Denver. She was singled out by many as a super cow prospect.
- "Y134" has performed well on a limited grain ration and should work well in your herd as well.

igenity DNA Profile Scores										
ADG	Tenderness	Marb	% Choice	YG	Fat	REA	Hfr Preg Rate	Stayability	Calving Ease	Docility
3	1	6	6	6	6	7	4	5	4	5

Lot **47** Reg # 2594371 Tattoo: Y223 BD: 04/04/11  
BW 84 lbs BWR 108 Adj. WW: 722 lbs

SAS BLACK EAGLE SAS T101 SWEET MEAT  
2500873 SAS/GB SWEETIE BEAR  
SAS T223 QUEENIE BOZ REDCOAT  
2391478 SAS QUEENIE

EPDs													Carcass			
CE	BW	WW	YW	MCE	MM	MWW	Stay	CW	YG	Marb	BF	REA	API	TI		
9.2	-0.8	23.0	41.2	15.7	8.6	20.1	21.5	-14.1	0.00	0.42	0.02	-0.01	128.0	65.7		

- Dam's Production: 2 NR 98.
- Dam is an own daughter of Boz Redcoat, sire of Ankonian Cesar and one of the great "Red's" in the breed.
- "Black Eagle" has really come into his own for Ken and Amy Steinbronn. He has sired many good heifers for the Steinbronn and Springers, but his sons will catch your eye as well.

igenity DNA Profile Scores										
ADG	Tenderness	Marb	% Choice	YG	Fat	REA	Hfr Preg Rate	Stayability	Calving Ease	Docility
3	3	6	6	7	7	6	6	7	5	7

Lot **48** Reg # 2594954 Tattoo: Y234 BD: 04/10/11  
BW 76 lbs Adj. WW: 682 lbs

SAS BLACK EAGLE SAS T101 SWEET MEAT  
2500873 SAS/GB SWEETIE BEAR  
SAS POLLY W034 PVE/SAS T32 DIRTY DOG  
2500829 SAS POLLY S034

EPDs													Carcass			
CE	BW	WW	YW	MCE	MM	MWW	Stay	CW	YG	Marb	BF	REA	API	TI		
7.6	0.6	35.8	58.4	15.4	9.6	27.5	21.6	-2.2	0.14	0.28	0.07	0.09	120.0	67.0		

- Dam's Production: 1 NR 103.
- Dam is a first calf "Dirty Dog" heifer did a nice job with "Pauly," raiting a very respectable 103 for WW after a 76 lb BW.
- His sire has surpassed the high expectations set for him. Expect this young April bull to go out and settle cows the same as his sire.

igenity DNA Profile Scores										
ADG	Tenderness	Marb	% Choice	YG	Fat	REA	Hfr Preg Rate	Stayability	Calving Ease	Docility
4	3	4	4	7	7	5	7	6	5	6



2012 National Western Pen of Three Females which includes SAS Sugar, the high selling heifer from the fall 2011 Female Sale purchased by Horace & Della Kruse, New Boston, TX.



**KNIGHTS BLACK MAGNOLIA 142**

Dam of Lots 49-54



**SAS MAGNOLIA'S PRIDE • LOT 52**

**Lot 52 SAS MAGNOLIA'S PRIDE**

Reg # 2620310 Tattoo: Y018 BD: 02/10/11  
Adj. WW: 641 lbs (ET)

igenity DNA Profile Scores											
ADG	Tenderness	Marb	% Choice	YG	Fat	REA	Hfr Preg Rate	Stayability	Calving Ease	Docility	
4	4	5	5	7	6	5	7	7	6	8	

**Lot 53 SAS MAGNIFICENT Y044**

Reg # 2620309 Tattoo: Y044 BD: 02/10/11  
Adj. WW: 666 lbs (ET)

igenity DNA Profile Scores											
ADG	Tenderness	Marb	% Choice	YG	Fat	REA	Hfr Preg Rate	Stayability	Calving Ease	Docility	
4	4	5	5	7	6	5	7	7	6	8	

EPDs												Carcass				
CE	BW	WW	YW	MCE	MM	MWW	Stay	CW	YG	Marb	BF	REA	API	TI		
4.6	1.3	23.2	53.4	9.9	8.5	20.1	24.9	-3.1	-0.11	-0.03	0.02	0.45	103.0	52.0		

- Dam's Production: 4 NR 109.
- Lot 52 and 53 are Homozygous Black and Homozygous Polled.
- Here are two of the best "Power Drive" sons anywhere. They are phenomenally stout, have grown very well that "herd bull" look. The pair call to mind a stouter version of Pfv/SAS T32 Dirty Dog. Two high quality bulls that offer outcross pedigrees to "Trademark" and "Dream On."
- Females sired by either of these, going back to "Magnolia," would give you exciting females for replacements or the show ring.
- Maternal sibs sell as Lots 49-51 and 54.

igenity DNA Profile Scores											
ADG	Tenderness	Marb	% Choice	YG	Fat	REA	Hfr Preg Rate	Stayability	Calving Ease	Docility	
5	3	7	7	7	7	7	4	6	6	5	5

**Lot 54 SAS MEAT Y117**

Reg # 2621446 Tattoo: Y117 BD: 02/26/11  
BW 84 lbs Adj. WW: 730 lbs (ET)

igenity DNA Profile Scores											
ADG	Tenderness	Marb	% Choice	YG	Fat	REA	Hfr Preg Rate	Stayability	Calving Ease	Docility	
5	6	6	6	7	7	4	6	7	4	8	

EPDs												Carcass				
CE	BW	WW	YW	MCE	MM	MWW	Stay	CW	YG	Marb	BF	REA	API	TI		
4.0	2.0	33.5	57.3	12.8	3.2	20.0	23.7	-0.6	0.00	0.12	0.04	0.26	108.0	60.0		

- Dam's Production: 4 NR 109.
- "Y117" is representative of all the "Sweet Meat" x "Magnolia" crosses, big and stout. You cannot go wrong with any of these maternal brothers, especially if one of your goals is keeping back females. They offer all the muscle and power for their calves to top feeder and fat cattle sales.
- Maternal sibs sell as Lots 49-53.

igenity DNA Profile Scores											
ADG	Tenderness	Marb	% Choice	YG	Fat	REA	Hfr Preg Rate	Stayability	Calving Ease	Docility	
5	6	6	6	7	7	4	6	7	4	8	



**SAS LONG LIVE COWBOYS**

Sire of Lot 55

**Lot 55 SAS COWBOY UP**

Reg # 9779271 Tattoo: Y028 BD: 02/02/11  
BW 87 lbs BWR 101 Adj. WW: 665 lbs WWR: 94

igenity DNA Profile Scores											
ADG	Tenderness	Marb	% Choice	YG	Fat	REA	Hfr Preg Rate	Stayability	Calving Ease	Docility	
3	5	7	7	6	5	8	6	6	4	6	

EPDs												Carcass				
CE	BW	WW	YW	MCE	MM	MWW	Stay	CW	YG	Marb	BF	REA	API	TI		
6.0	1.1	26.6	49.4	9.4	2.6	15.9	22.7	-6.3	0.02	0.13	0.01	-0.06	108.8	57.2		

- Dam's Production: 4 NR 101. Calving Interval 4 @ 347 days.
- Sire is an extremely easy calving bull that throws a lot of "balidies." The majority of his calves were heifers for Jeff, but they are all in the "keeper" pen!
- Dam is from the "Samantha" cow family and she produced a long sided, big hipped outcross bull that will really power up your next calf crop.

igenity DNA Profile Scores											
ADG	Tenderness	Marb	% Choice	YG	Fat	REA	Hfr Preg Rate	Stayability	Calving Ease	Docility	
3	5	7	7	6	5	8	6	6	4	6	

**Lot 56 KFA MR SILAS**

Reg # 2600468 Tattoo: Y15H5 BD: 03/24/11

igenity DNA Profile Scores											
ADG	Tenderness	Marb	% Choice	YG	Fat	REA	Hfr Preg Rate	Stayability	Calving Ease	Docility	
4	3	5	5	6	5	6	7	7	5	8	

EPDs												Carcass				
CE	BW	WW	YW	MCE	MM	MWW	Stay	CW	YG	Marb	BF	REA	API	TI		
7.5	1.1	27.8	47.1	11.1	-7.2	6.7	NA	-8.0	0.00	0.31	0.02	0.06	109.1	60.6		

- Dam's Production: Calving Interval 3 @ 374 days.
- Sire is also the sire of "Sweet Meat," a bull that has made quite a name for himself so far.
- Dam is sired by outstanding show ring sire, whose daughters were named grand champion in Denver numerous times.
- "Silas" has performed well and with his muscling and nice depth of body, he has the chance to really shine in your herd.

igenity DNA Profile Scores											
ADG	Tenderness	Marb	% Choice	YG	Fat	REA	Hfr Preg Rate	Stayability	Calving Ease	Docility	
4	3	5	5	6	5	6	7	7	5	8	

igenity DNA Profile Scores											
ADG	Tenderness	Marb	% Choice	YG	Fat	REA	Hfr Preg Rate	Stayability	Calving Ease	Docility	
5	6	6	6	7	7	4	6	7	4	8	

**Lot 57 KFA MR GARTH**

Reg # 2587249 Tattoo: Y65 BD: 03/21/11

igenity DNA Profile Scores											
ADG	Tenderness	Marb	% Choice	YG	Fat	REA	Hfr Preg Rate	Stayability	Calving Ease	Docility	
6	3	5	5	6	5	6	7	8	5	8	

EPDs												Carcass				
CE	BW	WW	YW	MCE	MM	MWW	Stay	CW	YG	Marb	BF	REA	API	TI		
7.4	0.3	27.5	48.4	11.9	-0.1	13.6	19.3	-8.3	0.04	0.20	0.02	-0.06	108.9	60.2		

- HTP SVF IN DEW TIME
- HTP SVF HONEYDEW
- DRAKE GUINEVERE
- G&L AVALANCHE 149F
- DRAKE LIBERTY
- Dam's Production: 3 BWR 98. Calving Interval 6 @ 373 days.
- Paternal brother to "Sweet Meat," a bull that continues on the legacy of calves that do everything right for maximum profit.
- Dam is an own daughter of "Avalanche," a bull that has sired numerous top selling heifers and herd bulls across the country.
- "Garth" displays good depth and muscling and has performed well.

igenity DNA Profile Scores											
ADG	Tenderness	Marb	% Choice	YG	Fat	REA	Hfr Preg Rate	Stayability	Calving Ease	Docility	
6	3	5	5	6	5	6	7	8	5	8	

**Lot 58 KFA MR PEDRO**

Reg # 2587248 Tattoo: Y862 BD: 02/19/11

igenity DNA Profile Scores											
ADG	Tenderness	Marb	% Choice	YG	Fat	REA	Hfr Preg Rate	Stayability	Calving Ease	Docility	
2	1	6	6	6	5	7	6	5	5	6	

EPDs												Carcass				
CE	BW	WW	YW	MCE	MM	MWW	Stay	CW	YG	Marb	BF	REA	API	TI		
3.7	1.8	35.4	62.2	8.2	1.0	18.8	20.3	2.1	-0.05	0.14	0.02	0.34	104.2	61.6		

- SVF STAR POWER S802
- SVF SHEZA STAR N902
- KFA GABBY
- SAS T101 SWEET MEAT
- DRAKE GUINEVERE
- Sire has a great pedigree and amazing style and eye appeal.
- Dam is a "Sweet Meat" first calf heifer who has produced a young herd sire prospect who has eye appeal and has done well and has the will to grow.

igenity DNA Profile Scores											
ADG	Tenderness	Marb	% Choice	YG	Fat	REA	Hfr Preg Rate	Stayability	Calving Ease	Docility	
2	1	6	6	6	5	7	6	5	5	6	

EPDs												Carcass				
CE	BW	WW	YW	MCE	MM	MWW	Stay	CW	YG	Marb	BF	REA	API	TI		
3.7	1.8	35.4	62.2	8.2	1.0	18.8	20.3	2.1	-0.05	0.14	0.02	0.34	104.2	61.6		



**SVF STAR POWER S802**

Sire of Lot 58



**HSF HIGH ROLLER 12T**  
Sire of Lots 59 and 60

Lot **61**  
Reg # 2620257 Tattoo: 14Y BD: 03/27/11  
BW 90 lbs BWR 97 Adj. WW: 688 lbs WWR: 98

**DIKEMANS SURE BET** TJ 57J THE GAMBLER  
2294262 MEGAN 9M  
**AKF SHELLY S14** PVF-BF BF26 BLACK JOKER  
2358500 SAC MISS PATENT 46F

EPDs												Carcass																	
CE	BW	WW	YW	MCE	MM	MWW	Stay	CW	YG	Marb	BF	REA	API	TI	CE	BW	WW	YW	MCE	MM	MWW	Stay	CW	YG	Marb	BF	REA	API	TI
6.5	0.1	28.6	53.3	9.2	7.5	21.8	22.9	-5.5	-0.08	0.25	0.03	0.41	120.0	64.0	7.7	-2.2	4.3	7.1	5.1	0.4	2.5	NA	-36.4	-0.04	0.15	0.03	-0.09	85.6	45.0

- Dam's Production: 4 NR 104.
- "Sure Bet" is siring some of the best EPD cattle in the breed today. They offer carcass excellence in a very moderate, easy fleshing package.
- Nitro Express comes from a paternal cow family that possess perfectly shaped udders and teats and excel in longevity.

igenuity DNA Profile Scores											
ADG	Tenderness	Marb	% Choice	YG	Fat	REA	Hfr Preg Rate	Stayability	Calving Ease	Docility	
4	6	5	5	6	5	4	6	7	5	7	

Lot **59**  
Reg # 2620256 Tattoo: 22Y BD: 03/23/11  
BW 84 lbs BWR 104 Adj. WW: 705 lbs WWR: 100

**HSF HIGH ROLLER 12T** TJ 57J THE GAMBLER  
2408113 HSF RED FORTUNES SIS 33  
**AKF MISS 22T** CNS DREAM ON L186  
2415992 AKF MARLA M34

EPDs												Carcass																	
CE	BW	WW	YW	MCE	MM	MWW	Stay	CW	YG	Marb	BF	REA	API	TI	CE	BW	WW	YW	MCE	MM	MWW	Stay	CW	YG	Marb	BF	REA	API	TI
14.9	-2.9	32.2	54.9	12.0	5.3	21.4	19.6	-9.4	-0.07	0.22	0.02	0.25	128.0	70.0	7.0	1.9	44.8	75.5	8.5	-0.8	21.6	17.3	9.9	-0.04	0.31	0.01	0.37	115.0	72.0

- Dam's Production: 3 NR 89.
- Sire is producing calves that are receiving industry wide acceptance for their good growth, moderate birth weights and soundness and functionality.
- Dam is an own daughter of "Dream On," the now deceased sire who was the perennial leader in registrations for the breed.
- Ultra Magnum is one of the most promising calving ease bulls to come along and a paternal brother to WS All In, a past high selling bull to Kenner Stimmentals and ABS.

igenuity DNA Profile Scores											
ADG	Tenderness	Marb	% Choice	YG	Fat	REA	Hfr Preg Rate	Stayability	Calving Ease	Docility	
4	6	5	5	4	4	5	6	6	5	6	

Lot **60**  
Reg # 2620254 Tattoo: 13Y BD: 03/06/11  
BW 82 lbs BWR 106 Adj. WW: 690 lbs WWR: 98

**HSF HIGH ROLLER 12T** TJ 57J THE GAMBLER  
2408113 HSF RED FORTUNES SIS 33  
**AKF TWINKEL 13T** ES DAKOTA NK68  
2386676 AKF MISS 36N

EPDs												Carcass																	
CE	BW	WW	YW	MCE	MM	MWW	Stay	CW	YG	Marb	BF	REA	API	TI	CE	BW	WW	YW	MCE	MM	MWW	Stay	CW	YG	Marb	BF	REA	API	TI
11.7	-1.6	37.7	67.9	10.2	9.1	28.0	19.4	0.4	-0.06	0.10	0.01	0.25	118.0	69.0	7.0	1.9	44.8	75.5	8.5	-0.8	21.6	17.3	9.9	-0.04	0.31	0.01	0.37	115.0	72.0

- Dam's Production: 3 NR 100.
- Here is a beautiful baldy with eye appeal that deserves your attention.
- Dam is sired by one of the best true performance bulls in the breed that is backed by an outstanding cow family and traces to "Preferred Stock."
- A heifer bull prospect that is the **Total Package**. elite calving ease combined with proven profit driven genetics and marketability!.
- High Roller is a wide based heavy boned herd sire with a big sound, perfectly constructed hoof, yet is a proven calving ease bull that passes on those traits to his progeny.

igenuity DNA Profile Scores											
ADG	Tenderness	Marb	% Choice	YG	Fat	REA	Hfr Preg Rate	Stayability	Calving Ease	Docility	
5	4	5	5	4	3	6	8	6	4	6	

Lot **62**  
Reg # 2620255 Tattoo: 25Y BD: 03/18/11  
BW 94 lbs BWR 93 Adj. WW: 730 lbs WWR: 104

**DIKEMANS SURE BET** TJ 57J THE GAMBLER  
2294262 MEGAN 9M  
**AKF MISS 25U** ES DAKOTA NK68  
2459798 AKF KINSEY 27K

EPDs												Carcass																	
CE	BW	WW	YW	MCE	MM	MWW	Stay	CW	YG	Marb	BF	REA	API	TI	CE	BW	WW	YW	MCE	MM	MWW	Stay	CW	YG	Marb	BF	REA	API	TI
7.0	1.9	44.8	75.5	8.5	-0.8	21.6	17.3	9.9	-0.04	0.31	0.01	0.37	115.0	72.0	7.0	1.9	44.8	75.5	8.5	-0.8	21.6	17.3	9.9	-0.04	0.31	0.01	0.37	115.0	72.0

- Dam's Production: 2 BWR 95, 2 NR 106. Calving Interval 2 @ 371 days.
- Here is a herd bull prospect that blends the EPD superiority of "Sure Bet" and the performance excellence and maternal backing of "Dakota."
- You've hit the **Jackpot** if you're looking to add power and carcass value to your herd!
- Sure Bet's sons have been past sale high selling bulls for Gibbs Farms and Triangle J Ranch and many others

igenuity DNA Profile Scores											
ADG	Tenderness	Marb	% Choice	YG	Fat	REA	Hfr Preg Rate	Stayability	Calving Ease	Docility	
3	7	5	5	4	4	5	8	6	5	5	



**DIKEMANS SURE BET**  
Sire of Lots 61 and 62

Lot **63**  
Reg # 2600466 Tattoo: Y141 BD: 03/15/11

**BMR EXPLORER** WESTFALL VOYAGER 721P  
2385799 WW MISS MY DREAM 429R  
**JENNA**  
9516689

EPDs												Carcass																	
CE	BW	WW	YW	MCE	MM	MWW	Stay	CW	YG	Marb	BF	REA	API	TI	CE	BW	WW	YW	MCE	MM	MWW	Stay	CW	YG	Marb	BF	REA	API	TI
7.7	-2.2	4.3	7.1	5.1	0.4	2.5	NA	-36.4	-0.04	0.15	0.03	-0.09	85.6	45.0	7.7	-2.2	4.3	7.1	5.1	0.4	2.5	NA	-36.4	-0.04	0.15	0.03	-0.09	85.6	45.0

- "Explorer" calves have been tearing up the show ring the last few years.
- "Jaron" has nice eye appeal and extra volume.

igenuity DNA Profile Scores											
ADG	Tenderness	Marb	% Choice	YG	Fat	REA	Hfr Preg Rate	Stayability	Calving Ease	Docility	
4	1	7	7	7	6	5	6	7	4	6	



**WOODHILL FORESIGHT**  
Sire of Lot 65

Lot **64**  
Reg # 2596924 Tattoo: Y647 BD: 04/08/11  
BW 95 lbs BWR 92 Adj. WW: 771 lbs WWR: 109

**KLER RENEGADE** SAS/ASF ALL STAR  
2386641 HCC SWEETER THAN EVER  
**SAS/GB SWEETIE BEAR** ASR LITTLE BEAR L126  
2355604 SAS SWEET EYES

EPDs												Carcass																	
CE	BW	WW	YW	MCE	MM	MWW	Stay	CW	YG	Marb	BF	REA	API	TI	CE	BW	WW	YW	MCE	MM	MWW	Stay	CW	YG	Marb	BF	REA	API	TI
5.7	0.8	33.9	61.8	12.5	10.8	27.7	21.1	0.5	0.05	0.17	0.03	0.10	111.0	63.7	5.7	0.8	33.9	61.8	12.5	10.8	27.7	21.1	0.5	0.05	0.17	0.03	0.10	111.0	63.7

- Dam's Production: 4 BWR 99, 4 NR 109.
- Maternal brother to "Rio Bravo," sire of "Lady Belle," a member of a past Springer Pen of Three females in Denver and most powerful heifer at the show that year.
- If you are serious about cattle with stretch and the ability to grow quickly. What he lacks in pretty, he more than makes up for in overall power and growth.

igenuity DNA Profile Scores											
ADG	Tenderness	Marb	% Choice	YG	Fat	REA	Hfr Preg Rate	Stayability	Calving Ease	Docility	
3	4	5	5	6	6	6	6	6	3	6	

Lot **65**  
Born: 10/11/2010 16808747 Tattoo: 049 Bull

Papa Forte 1921 # [D2F-M1F] Papa Optima 9818  
**Woodhill Foresight #+ [AMF-CAF-XF]** Papa Envious Blackbird 8832  
13936986 Bon View Ganner 85 [CAC] Bon View Bando 598 # [CAC-AMF]  
V D A R Vision 243 #+ V D A R Rio 953 # [AMF]  
V D A R Beauty 831 + V D A R Polly 215  
13316040 V D A R Beauty 806 V D A R New Trend 315 # [AMF-CAF-XF]  
V D A R Shoshone Beauty 627

PRODUCTION EPDs				MATERNAL EPDs				\$ VALUES			
CE	BW	WW	YW	CEM	Milk	SEN	SW	SF	SG	SB	
1-3	1+4.0	1+47	1+80	1+1	1+24	-2.21	+24.36	+21.21	NA	NA	

- Here is the only purebred Angus bull in the sale, but what a "Dandy."
- Springer's selected the dam from Wayne Knight of AL and what a high production female she is. She has been flushed Simmental, so you can look forward to SimmAngus bulls in the future from this proven high performance, structurally correct cow.
- Sire is a Pathfinder that combines excellent maternal value with added performance and carcass merit.

We are excited to work with Richard Nicholas of Tremonton, Utah, as our bull sale representative. For 2012 we will host a bull sale viewing at the Hampton Inn, Tremonton, Utah starting with a complimentary meal at 4:30 p.m., sale starting at 5:30. The sale will be viewed on large screen television and bidding will be available through phone services or if pre-registered through your laptop online. The sale will be shown through DVAuction and or CattleUSA. It is our goal working with Richard to start a private treaty bull sale in 2013 in Tremonton sometime in April of 2013. We will be selling our fall, Jan, Feb and herdsires in Iowa and bring our late Feb and March calves to Utah. Purchases made in our Iowa sale will be shipped to Utah with the sale bulls. We have developed great relationships with long time buyers in the Utah, Wyoming area and are pleased our genetics have contributed to their profitability. We look forward to developing new friendships and will continue to provide seedstock that enhance your cattle operations.

Sincerely,  
Jeff Springer

"I have been using Springer bulls for a number of years now and I really like the calves out of them. I do not use implants on my calves yet they have increased in weight and I'm sure these Sim-Angus bulls have made that possible. I also notice that all the bulls I have purchased so far are easy fleshing/easy to maintain bulls. I have never had a single Springer bull become unsound or develop leg or feet problems which to me just adds more value to the purchase. Finally I would say that Jeff Springer is not the only person to raise good bulls, but I know I can trust him to keep his word and do every thing possible to make a bull purchase satisfactory to me." Richard Nicholas, Nicholas Livestock

Watch & bid online for FREE at [conoveronlinesales.com](http://conoveronlinesales.com)

powered by DVAuction



IT'S NEW...

IT'S EXCITING...

IT'S **CONOVERONLINEALES.COM**

Buying online is as easy as 1, 2, 3...

1. Create an account at [www.conoveronlinesales.com](http://www.conoveronlinesales.com) under the "register" tab
2. Apply for bidding approval by clicking on the "details" tab at least 24 hours prior to the auction-a DV representative will notify you once you have been approved
3. Tune in for the sale and make your purchases!

**High speed internet** is required for successful bidding-be sure to check the lag-time monitor in the top left corner to ensure real-time broadcasts.

**Proxy Bidding**-if you can't make time to watch the sale, register a proxy bid and let our system represent your bid while you're away. Look for the "proxy bid" tab on the auction listing, and fill in your maximum bids. We'll handle the rest!

**Having troubles?** During the auction, you can type a message to the operator at any time for assistance. Our full-time support team can also always be reached at (402) 474-5557.

**DVAuction**  
Broadcasting Real-Time Auctions

DVA Rep. Justin Dikoff (605) 290-0635 - email: [jdikoff@dvauction.com](mailto:jdikoff@dvauction.com)  
Please feel free to contact me with questions about the sale or to view the cattle for you.

**YOU CAN VIEW & BID ON EITHER SITE!**

**CATTLE USA.com**

CattleUSA will broadcast our sale and you are welcome to bid online . It will not be recording prices however so you will need to follow the auctioneer for your bidding .

To bid on [cattleusa.com](http://cattleusa.com) you must preregister no later than February 23rd. Decorah Sales will need to view credit references and issue a bidding number on Feb 24th.

Please go to [CattleUSA.com](http://CattleUSA.com), frequently asked questions, and then proceed to set up an account . A current account is sale barn specific so you will need to be authorized through Decorah Sales.

Please call Kim at Decorah Sales, 563-382-4203 or Jeff 641-330-6654 for questions or concerns .

**THANK YOU FOR YOUR BUSINESS  
& WE LOOK FORWARD TO SEEING  
YOU NEXT YEAR!**



**- NOTES -**



SPRINGER SIMMENTAL

Jeff & Lynda Springer  
3119 310th St  
Cresco, IA 52136

PRESORTED  
FIRST-CLASS MAIL  
U.S. POSTAGE PAID  
DES MOINES, IA  
PERMIT NO. 50

# Springer Simmental

## SALE OF VALUE BASED GENETICS



SATURDAY 5:30 PM FEBRUARY 25, 2012

*Decorah Sale Barn* - DECORAH, IOWA

